



# AIS

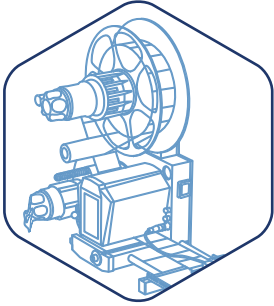
PRINT • APPLY • INSPECT



Engineering peace of mind



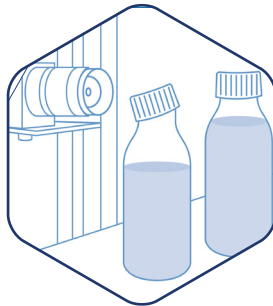
# We supply complete solutions:



**Automatic Labelling**



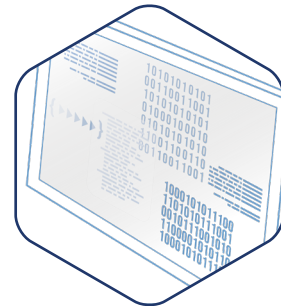
**Inkjet & Laser**



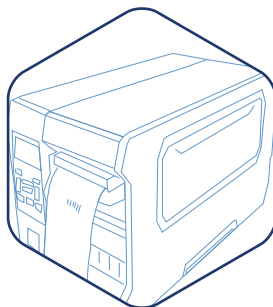
**Vision Systems**



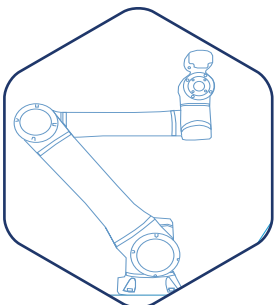
**Barcode Verifiers**



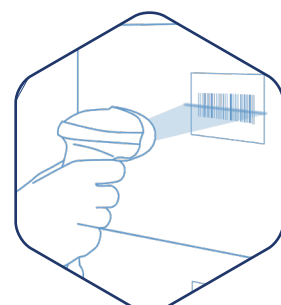
**Software**



**Label Printers**



**Robotics**



**Barcode Scanners**

Engineering peace of mind

# About us:

We supply complete solutions for Automatic Labelling, Machine Vision, Barcode Scanning, Barcode Verification, Label Printing, Coding and Marking and Robotics to a number of industries including life sciences, food and beverage, manufacturing and logistics.

Established in 1998, with the following companies now part of the group:

- ◆ AIS Ltd (Dublin)
- ◆ AIS Automation (Dundalk, Ireland)
- ◆ AIS Vision (Barcelona, Spain)
- ◆ AIS Scanology (Beugen, The Netherlands)
- ◆ Rosepetal (Barcelona, Spain)

## Why choose us?

With our combined team experience across Europe, we are focused on providing the customer with the right solution, engineered to the highest standards and combined with the technical support that the industry demands.

From initial contact, our Sales Engineers work closely with our customers to fully understand their needs.

Our Design Engineers design and install our solutions while our Service team assures the customer of a dedicated after-sales support.

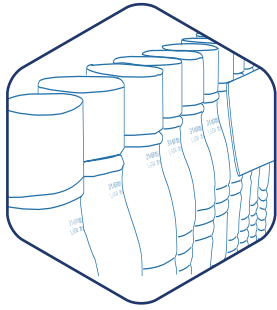
Our success has been built on our customer-focused approach, our quality engineering and our focused pre and post-sales customer service.

## Our partners

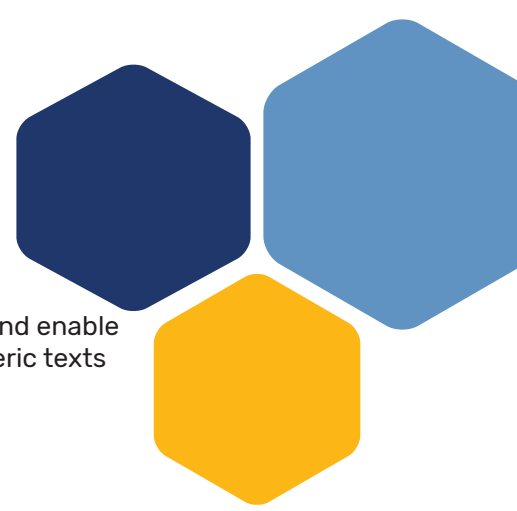


Engineering peace of mind

# INKJET & LASER



Industrial marking systems play a key role in production and enable clear marking of products with codes, logos or alphanumeric texts directly onto nearly any surface.



## Continuous Inkjet Printers (CIJ)

Typical applications include coding cables, printing expiration and best-before dates on packages, and marking lot numbers on extrusion and automotive parts. We have partnered with Leibinger, who, with their state-of-the-art technology, a unique automated Sealtronic nozzle seal, and production in Germany, guarantees maximum reliability and efficiency for the production process. Sealtronic removes the cleaning problem, so you enjoy faster start-up, greater productivity, lower costs and more consistent print quality.



## Thermal Inkjet Printers (TIJ)

For any TIJ needs we have partnered with HSA Systems, a leading manufacturer of industrial inkjet equipment headquartered in Denmark. Their printers are based upon reliable HP inkjet technology, which delivers consistent, high-quality, fast printing, exceptional value and ease of use.

## Industrial Marking

AIS provide laser systems to carry out higher quality marking on a wide range of substrates and surfaces, they require no consumables or spare parts, is an environment-friendly technology, reliable and permanent, as well as fast, flexible and easy to adapt to harsh production environments.

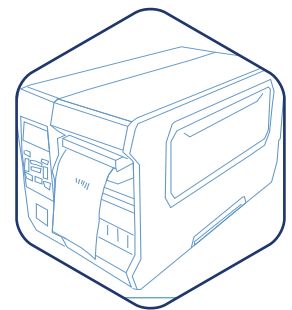
# LABEL PRINTERS:

With decades of experience, the team at AIS know a thing or two about label printers. We have expanded our partners and our offering during this time to include leading manufacturers such as Zebra, Cab and Sato. Our product range extends to:

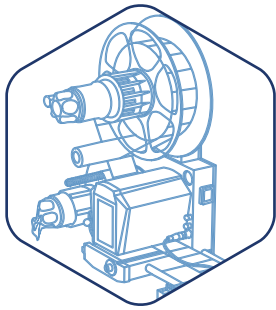
- Industrial
- Desktop/Mobile
- Print Engines
- Industrial Colour Printers
- Hazardous Label Printers

In addition, we also supply labels, ribbon, parts and warranties to ensure that you get the most out of your investment, backed up by the support of an expert team.

We can also advise on the best label design software to suit your requirements or a wider Label Management System (LMS) from our partner Software Nicelabel, which includes everything you need to standardise, centralise and control your labelling.



# AUTOMATIC LABELLING:



Our engineering team has accumulated decades of combined experience in the field of automatic labelling machines and partnering with global manufacturers, Herma, Altech and Cab, we offer several labelling solutions to suit every product and budget to include:

- Manual solutions
- Semi-Automatic solutions
- Fully Automatic solutions

Whatever your product shape or size we have a labelling machine to suit your needs and budget.



Vials and tube labelling



Cylindrical wrap-around



Bottle labelling



Tray labelling



Front labelling



Multi-sided labelling



Top Apply Labelling



Bottom Apply Labelling



Side Labelling



Top-Bottom Labelling



Pails and Can Labelling



Front and back bottle labelling



Pallet Labelling



Conical Product Labelling



Cosmetic Labelling



Continuous film printing



Tamper Evident Labelling

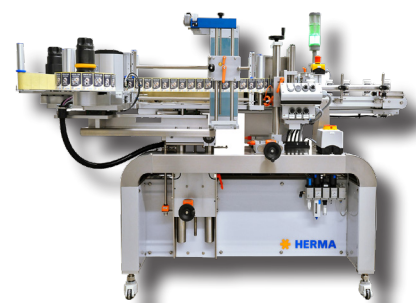


Bag Labelling

Our range of automatic label applicators ensure that products are labelled at high speeds across multiple production lines by reliable and robust equipment from a range of standard and bespoke solutions.

We can also advise on a wide range of configurations to accommodate any print and apply requirement. The modular approach means that the perfect match of labelling head and choice of application method can be combined with the right mounting option to solve even the most difficult of labelling problems.

If you have a requirement to label small batches of product, then a semi-automatic labeller is an ideal way of gaining the benefits of automatic labelling, such as label placement accuracy, while reducing the capital outlay.



Engineering peace of mind

# VISION INSPECTION:



We are a turnkey machine vision systems integrator; we design, install, commission, validate and maintain machine vision systems in Ireland and abroad for a range of companies in the lifesciences, manufacturing and food and beverage industries.

Using machine vision technology for purposes of inspection and quality control enables manufacturing companies to:

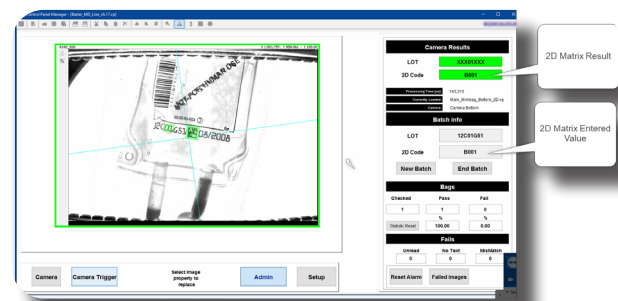
- Prevent defective products from being shipped to customers.
- Improve manufacturing processes.
- Reduce costs.



Our experienced Vision Engineers create solutions using top quality machine vision technology from leading supplier Cognex, ranging from simple vision sensors up to smart cameras and embedded vision systems. These can be both bespoke or off the shelf and can be applied in a number of different applications.

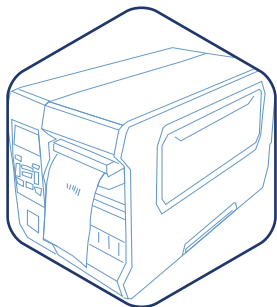
## Typical Machine Vision Applications include:

- Expiry Date Code Inspection/Lot Number Inspection
- Bottle Cap Inspection
- Bottle Filling Control/Capping
- Product Inspection
- Gauging and high precision measuring
- Lot and Expiry on base of Aluminium Can
- Barcode Inspection, Identification & Verification
- Food Industry – Product/Manufacturing Inspection
- Medical Device & Pharmaceutical Applications
- Automotive Industry
- Deep Learning/AI





# LABEL INSPECTION:



The Omron V275 print inspection system is used for product label verification in medical device manufacturing, pharmaceutical manufacturing, consumer goods packaging and speciality chemical manufacturing.

The V275 Series is a factory-built system integrated into the popular Zebra ZT600 thermal label printers used in thousands of factories.

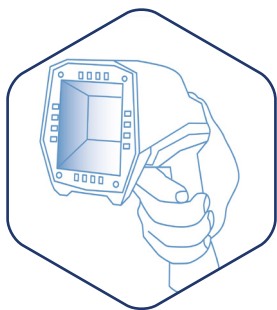
Printer-integrated label inspection systems are a highly effective way to prevent labelling errors and ensure that only high-quality barcodes make it onto final packaging.

The V275 grades 1D and 2D barcodes at normal printing speeds to ISO 15415, ISO 15416 and GS1 standards while inspecting human readable content for accuracy and print quality using OCR, OCV and blemish detection tools.

If an error is discovered, the system can be programmed to stop all printing immediately. This unique solution builds upon Omron's experience helping global companies comply with regulations like FDA, EPA, and US DOT as well as industry-specific guidelines from AIAG, GS1 and ISO.



# BARCODE VERIFICATION:



Help achieve industry and governmental labelling regulatory compliance. Barcode verification using barcode verifiers is a complex and highly technical field. There are numerous ISO and industry standards governing barcode print quality, symbologies and structures. The complex nature of the subject can be very confusing and may lead to incorrectly labelled products being shipped, causing product returns, fines or customer complaints.

We work with leading manufacturers Omron and Cognex, to offer a range of barcode verifiers that are GS1 Certified and strictly compliant with ISO/CEN/ANSI barcode quality and symbology specifications.



Engineering peace of mind

The background features a dark blue field with abstract orbital lines and nodes. In the top-left corner, there are three hexagons: two in shades of blue and one in yellow. In the bottom-right corner, there are three hexagons: one yellow and two in shades of blue. The central text is white and stands out against the dark background.

[www.aisltd.ie](http://www.aisltd.ie)

**Automatic Identification Systems Ltd**

Unit 46-49 Canal Walk,  
Park West Industrial Estate, Nangor Road  
Dublin, D12 XF62, Ireland  
Tel: +353 (0)1 6205742  
Email: [info@aisltd.ie](mailto:info@aisltd.ie)