

414

Semi-automatic machine for pick-and-place labelling

This very compact and robust machine will label products of a wide variety of shapes. Whether the surfaces are flat or convex, the optimum result is guaranteed. Even the application of labels onto elevations, into recesses, or around one or several edges will be no problem for the 414.

The applicator is the outstanding **HERMA 400** which means state-of-the-art labelling. This also means that all printers from the **HERMA 400** range can be fitted on the 414.

The key to the precision of the 414 is the patented HERMA moving dispensing beak: it ensures that the label is placed onto the application pad with great precision. This also applies to labels with unconventional shapes.

NEW: thanks to its versatility and flexibility the basic unit of the **HERMA 400** applicator is used here for the entire control of the machine.

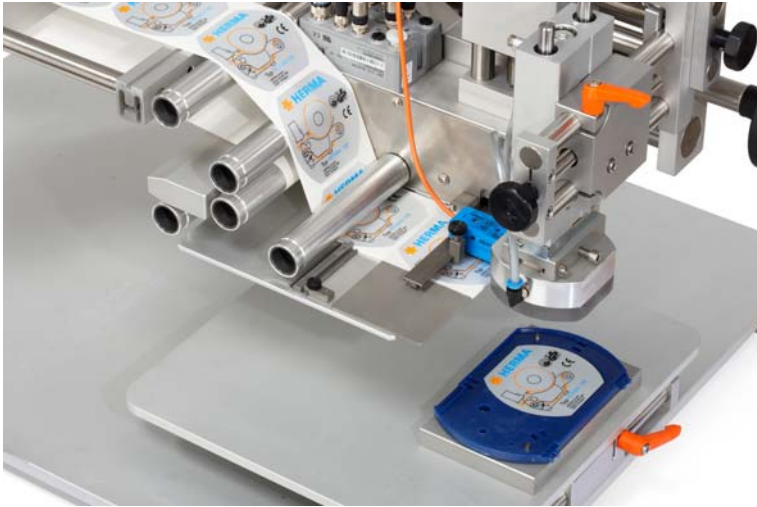
No PLC required!

No control box required!

Comfortable setting of all required parameters via integrated operator display.



414



HERMA 414 with moving dispensing beak

Technical data of the 414

Web width	up to 80 mm or 160 mm (3" or 6")
Label reel diameter	300 mm (12")
Labelling performance	approx. 30 labels/min.
Power supply	Wide range power input 100V AC ... 240V AC $\pm 10\%$, 50 Hz ... 60 Hz
Power consumption	approx. 400 VA
Compressed air supply	6 bar (87 PSI)

**Integrated HERMA 400 applicator.
One for all.**

We are constantly endeavouring to improve our products.
All technical data is therefore subject to change without prior notice.

HERMA GmbH
Labelling Systems Division
73779 Deizisau / Germany
www.herma.com
www.herma-labeler.com